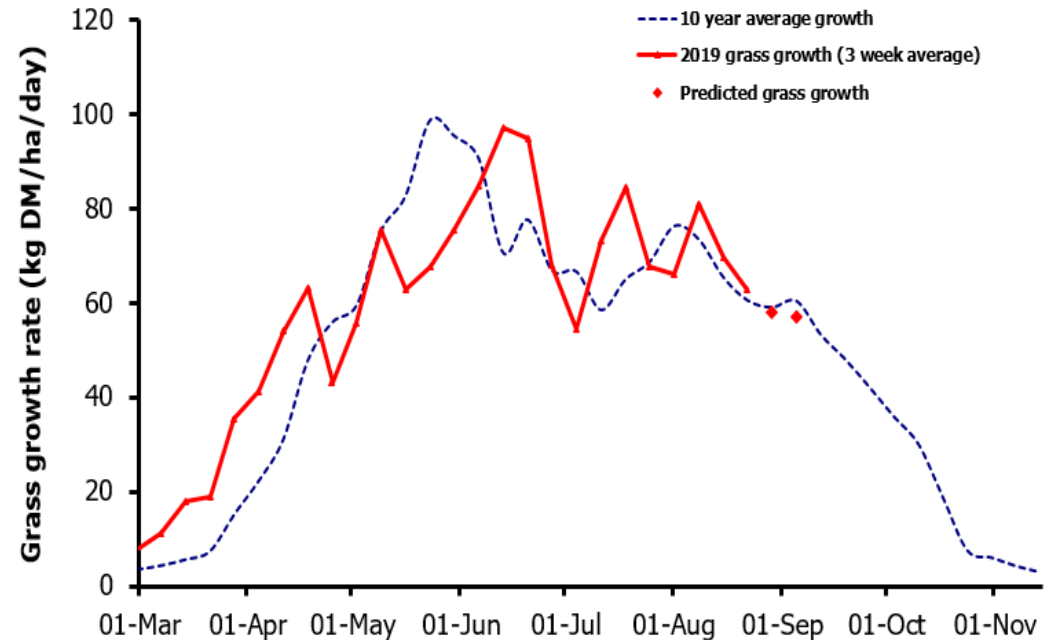
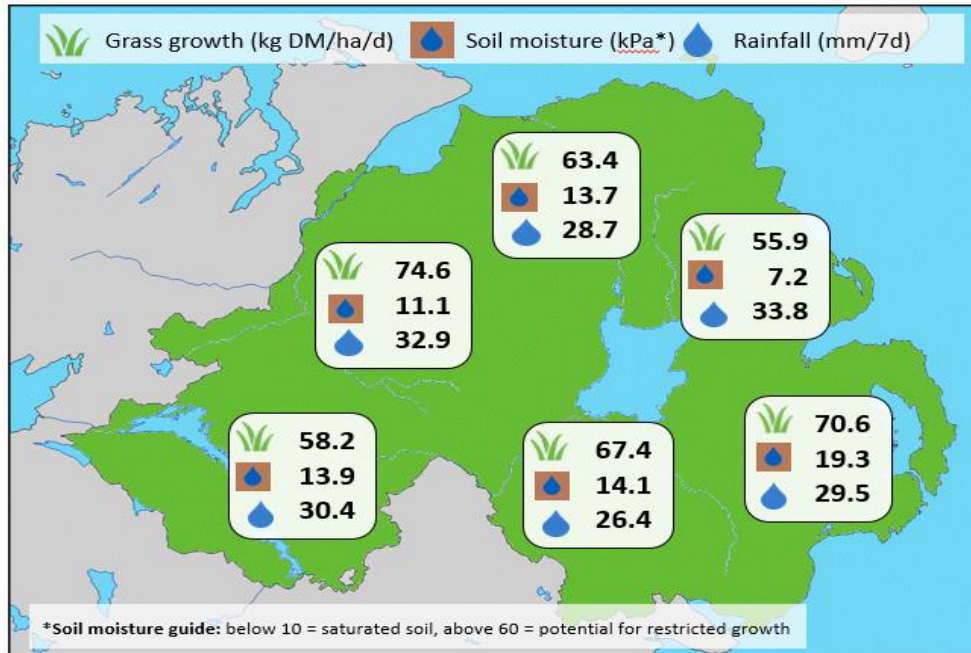


Week Beginning 19 August 2019



Weekly Grass Growth (kg DM/ha/day)		
GrassCheck plots		62.9
Dairy farms*		70.0
Beef & sheep farms*		66.7
Forecast	7 day	57.9
	14 day	57.0

	Grass Quality	
	Plots	On-farm
DM (%)	15.5	14.8
ME (MJ/kg DM)	10.6	10.7
CP (% DM)	16.7	15.2
WSC (% DM)	11.8	12.0

MANAGEMENT NOTES:

- Grass growth rates from the plots have continued to decline this week which is typical for this time of year. On-farm growth rates (68 kgDM/ha/day) had a slight decline but remain good for this time of year (7 kgDM/ha/day above long-term averages).
- Grass quality (particularly ME) has declined this week which was likely caused by the recent wet weather which resulted in target post grazing residuals not being achieved in the last rotation. With improved ground conditions aim to achieve target residuals (tighter grazing or topping) this rotation to improve quality for the remainder of the season.

*On-farm grass growth data supplied by AgriNet

GrassCheck plots receive 270 kgN/ha/year

