

Larne Lough

Site information

Larne Lough is a sea lough situated on the east coast of Northern Ireland, enclosed to the east by the peninsula of Islandmagee. The main freshwater sources are Glynn and Larne rivers.

Characteristics

Volume (millions m ³)	Total area (km ²)	Maximum depth (m)	Catchment area (km ²)	Temperature range (°C)	Mean salinity	Flushing time (days)	Freshwater run-off (millions m ³ y ⁻¹)
27	8	10	115	4-18	33	2-20	101

Nutrients

Mean nutrient concentration ($\mu\text{mol l}^{-1}$)

Ammonium	Nitrate	Phosphorus	Silicate
2.57	8.13	0.63	9

Nutrient load (ton year⁻¹)

Nitrogen	Phosphorus
300	6

Aquaculture

Licensed sites	Total aquaculture area (km ²)	Species
6	0.9	Mussels and oysters

Conservation



Larne Lough

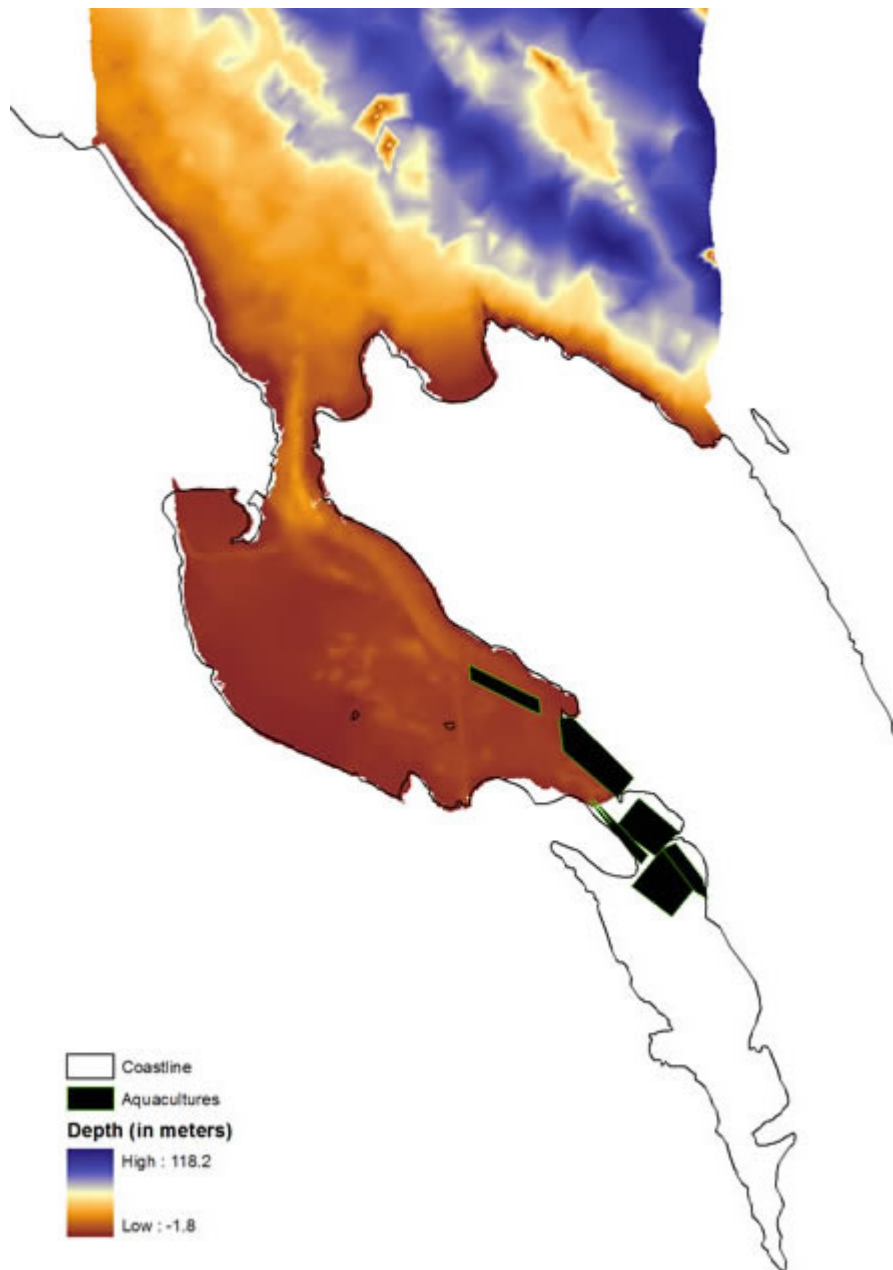
ASSI - Area of Special Scientific Interest

RAMSAR site

SPA - Special Protection Area

NNR – National Nature Reserve

RSPB reserve



Larne Lough